

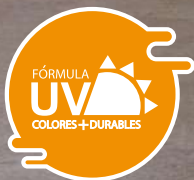


# FORTUNA LATEX SUPERIOR

CONOCE NUESTRA  
**CARTA DE  
COLORES**  
2021

CON ADMITIVO  
**ANTI  
SALITRE**

**RINDE**  
**40m<sup>2</sup>**  
APROX



[www.pinturascrons.com](http://www.pinturascrons.com)



# CRON'S®

## **BAJO OLOR**

Reducción de nivel de olor emitido por la pintura

## **MÁS PODER CUBRIENTE**

Superficie lisa, suave y de buena apariencia

## **MÁS RENDIMIENTO**

Hasta 40m<sup>2</sup> 4Lt aprox. rendimiento teórico



**1**

Agite la pintura con una paleta hasta homogenizarla.

**2**

Diluir agregando 1 parte de agua por 4 partes de pintura.

**3**

Aplicar una capa delgada y uniforme. Evitar recargar. Dejar secar 2 a 4 horas entre manos

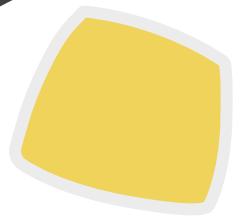


[www.pinturascrons.com](http://www.pinturascrons.com)

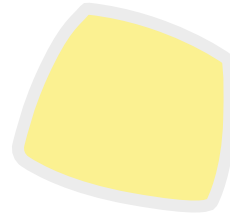


**CRON'S**<sup>®</sup>

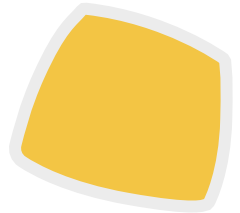
**FORTUNA  
LATEX SUPERIOR**



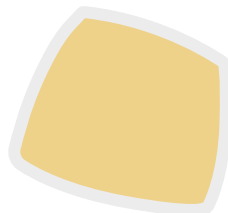
**GIRASOL**



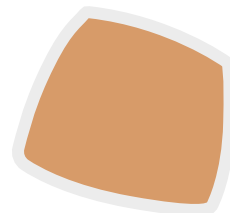
**JAZMÍN**



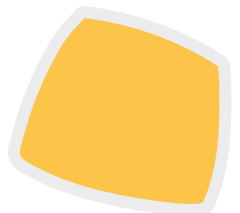
**MAIZ**



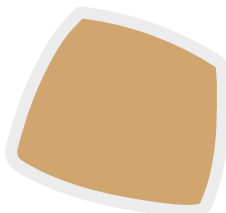
**CREMA**



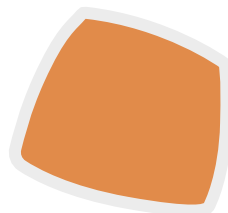
**MELÓN**



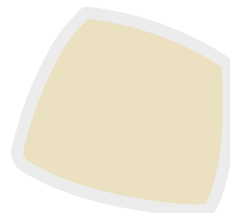
**AMARILLO TROPICAL**



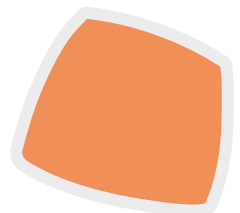
**SALMÓN**



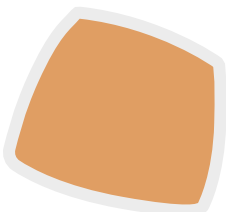
**MELOCOTÓN**



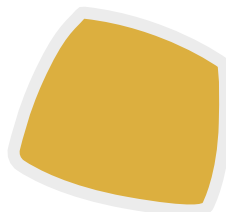
**MARFIL**



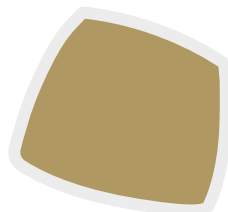
**ACUARELA**



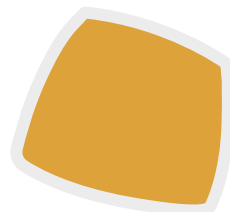
**ALBARICOQUE**



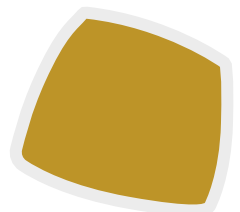
**MANGO**



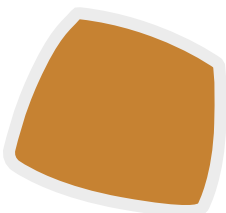
**MARACUYA**



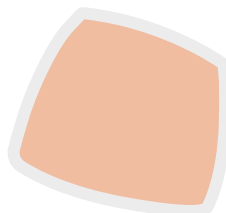
**NARANJA DULCE**



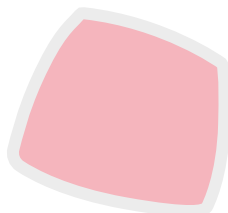
**AMARILLO OCRE**



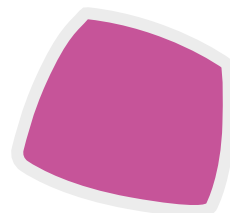
**DAMASCO**



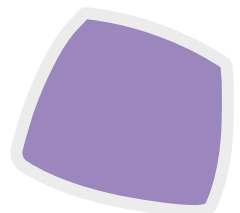
**COLONIAL**



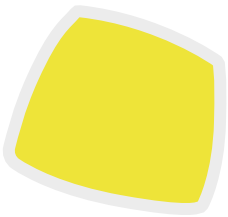
**ROSA TENTACIÓN**



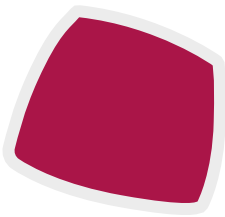
**BARBIE**



**LILA**



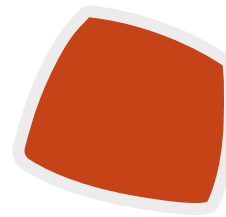
**AMARILLO LIMÓN**



**FUCSIA**



**NARANJA SOLAR**



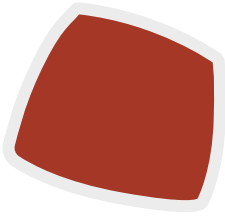
**NARANJA CORAL**



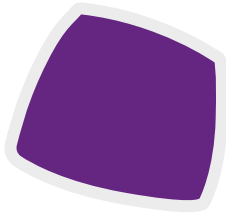
**SUNSET**



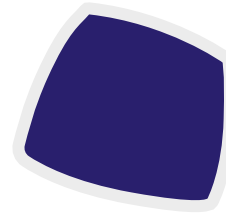
**ROJO BANDERA**



**ROJO TEJA**



**VIOLETA**



**AZUL ULTRAMAR**



**AZUL ELÉCTRICO**

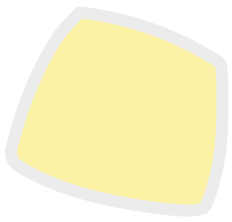


**VERDE THALO**

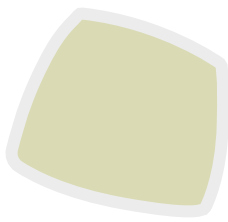


PARA USOS EN  
**INTERIORES Y  
EXTERIORES**

[www.pinturascrons.com](http://www.pinturascrons.com)



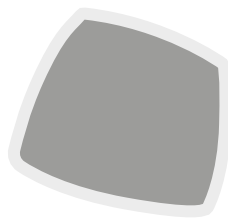
**MARFIL CONGO**



**CHAMPAGNE**



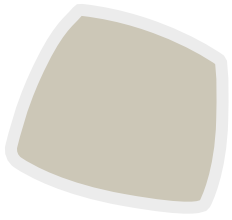
**GRANITO**



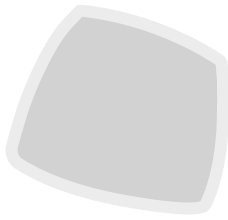
**GRIS PLATA**



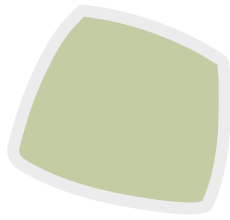
**BLANCO HUMO**



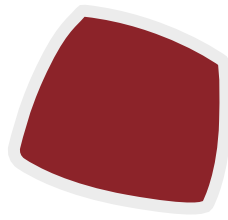
**BLANCO OSTRA**



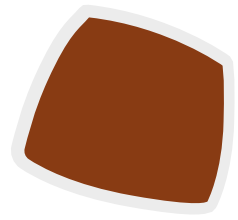
**GRIS CLARO**



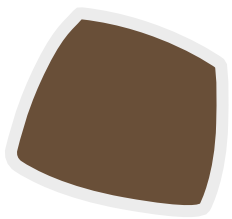
**ALABASTRO**



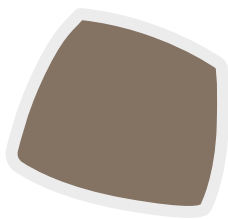
**ROJO CÁLIDO**



**CERÁMICO**



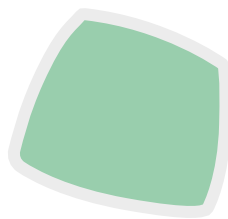
**TABACO**



**CASTAÑA**



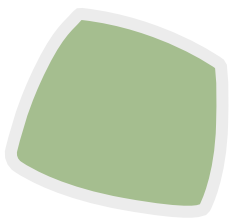
**CITRÓN**



**VERDE LUZ**



**VERDE LIMA**



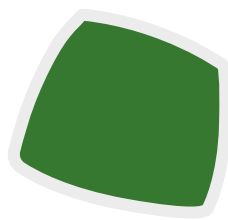
**VERDE NILO**



**TUNA**



**SÁBILA**



**HIERBABUENA**



**MAR CARIBE**



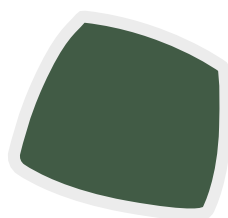
**VERDE ESMERALDA**



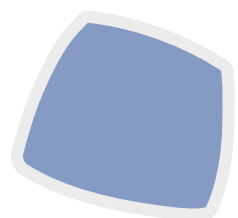
**VERDE JAMAICA**



**TURQUESA**



**VERDE TENNIS**



**AZUL ORIENTE**



**CELESTE**



**AZUL**



**ÁRTICO**



**ATLANTIS**



**AZUL ACERO**



# ACABADO MATE VINIL ACRÍLICO

MÁS DURABLE



**CORPORACIÓN CRONS PERÚ S.A.C**

Av. Pista Lenta Mz E 6 Lt. 14-A Urb. Pro Industrial - SMP

Tel.: 624-5529 / 719-7470 / 517-7266

Cel.: 955837448 / Ventas: 987625689

Email: [ventas@pinturascrons.com](mailto:ventas@pinturascrons.com)

RUC: 20514067377

[www.pinturascrons.com](http://www.pinturascrons.com)